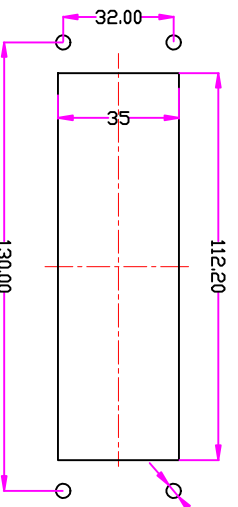
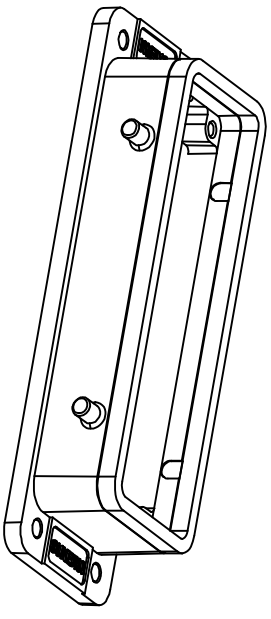
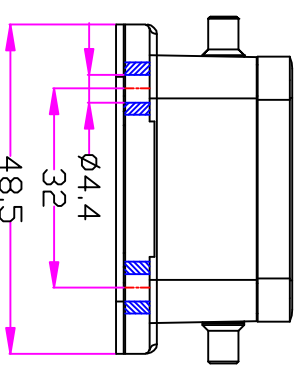
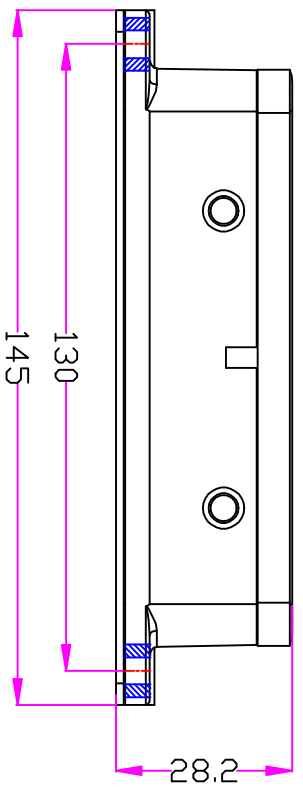


REVISION DATA				
SYM	ECN	DESCRIPTION	DATE	APPROVED



## 面板开孔图

Panel cut

**技术参数:**  
**材料:** 压铸铝  
**表面处理:** 粉末喷涂  
**颜色:** RAL7037灰色  
**温度范围:** -40℃~+125℃  
**防护等级:** IP65 (联锁状态)  
**密封元件:** NBR  
**出线方向:** 底出线

**Specifications:**  
**Material:** aluminium die-cast  
**Surface:** powder-coated  
**Color:** Grey (RAL 7037)  
**Limiting temperatures:** -40℃~+125℃  
**Degree of protection:** IP65  
**Hoods/Housings sealing:** NBR  
**Cable entry:** bottom entry

Tolerance	SIGNATURE	DATE	Units	mm	Part Name
0~≤20 ±0.15	DRAW		Size	A4	宁波欧科瑞连接器有限公司 NINGBO OUKERUI CONNECTOR CO., LTD.
20~≤50 ±0.25	DESIGN		Scale		PART NAME: HZW-H24B-ST-4g
50~≤80 ±0.35	CHECK		Sheet		Drawing NO.
80~≤120 ±0.50 APPROVE			Proj.		Material
					REV
					A